

IDLER

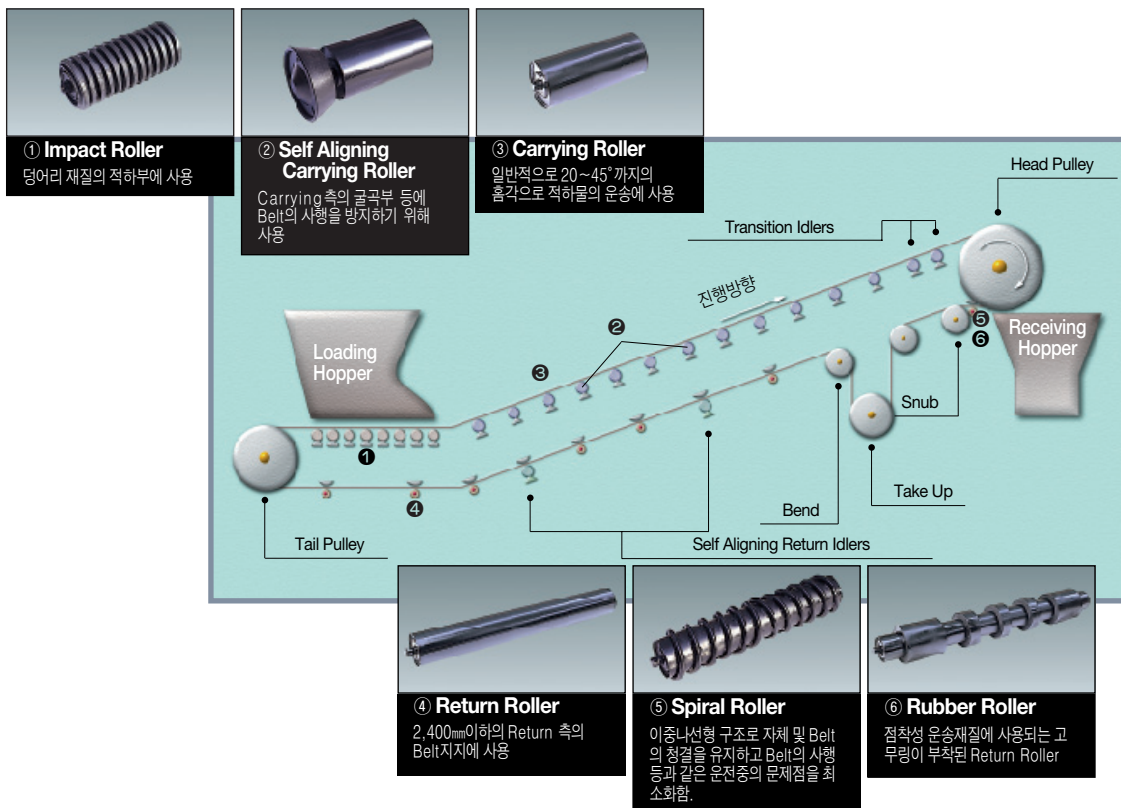
MATERIAL

DESCRIPTION	MATERIAL NAME	MATERIAL	
ROLLER PIPE	일반구조용 탄소강관	STK400	(KSD 3566)
	일반배관용 탄소강관	SPP	(KSD 3507)
SHAFT	마봉강	SGD30-D	(KSD 3561)
BEARING	고부하	-	(KSB 2023)
IDLER STAND	일반구조용 압연강재	SS400	(KSD 3503)

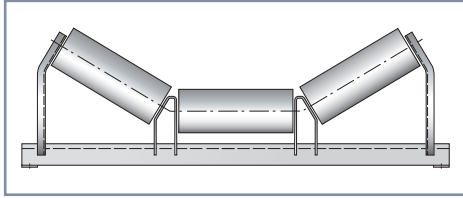
DIMENSION(ROLLER AND SHAFT DIA.)

CARRIER, RETURN ROLLER			IMPACT ROLLER		
BELT WIDE(mm)	ROLLER DIA.	SHAFT DIA.	BELT WIDE(mm)	ROLLER DIA.	SHAFT DIA.
BW 400~600	φ89.1	φ20	BW 400~600	φ90	φ20
BW 750~900	φ114.3		BW 750~900	φ115	
BW 1050~1200	φ139.8	φ25	BW 1050~1200	φ140	φ25
BW 1400~1600	φ165.2	φ30	BW 1400~1600	φ166	φ30
BW 1800~2000		φ35	BW 1800~2000		φ35
BW 2200		φ40	BW 2200		φ40

CONVEYOR ROLLER

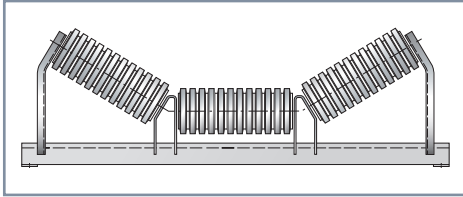


IDLERS TYPE



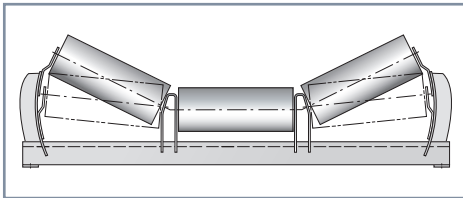
CARRYING IDLER

For transporting bulk material with the trough angle from 20° through 45° in general.
일반적으로 20°~45°까지의 홈각으로 적하물의 운송에 사용.



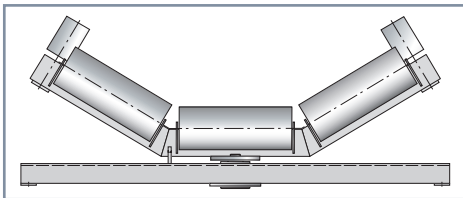
IMPACT IDLER

For the loading part to conveyor a lump material.
덩어리 재질의 적하부에 사용.



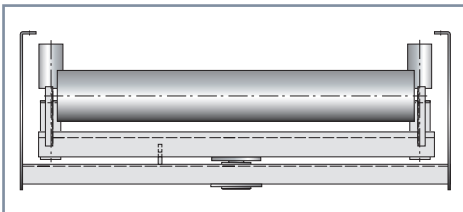
TRANSITION IDLER

For adjusting the angle of transporting & bulk material with trough angle from 5° through 25°
5°~25°까지의 홈각으로 적하물 운송의 각도 조절용



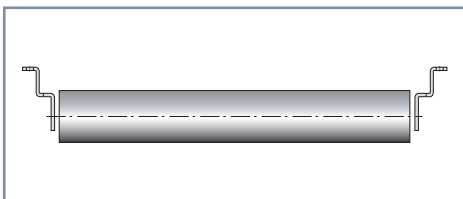
SELF ALIGNING CARRYING IDLER

For preventing the carrying belt from off-line, particularly needed for curved conveyors.
Carrying측의 굴곡부 등에 Belt의 사행을 방지하기 위해 사용.



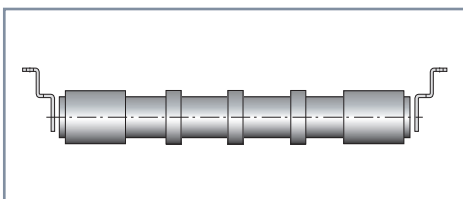
SELF ALIGNING RETURN IDLER

For preventing return belt from off-line, particularly needed for curved conveyors.
Return측의 굴곡부 등에 Belt의 사행을 방지하기 위해 사용.



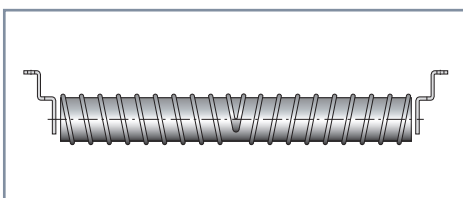
RETURN IDLER

For supporting the return belt with less than 2,400mm in with.
2,400mm이하의 RETURN 측 BELT 지지에 사용.



RUBBER DISC RETURN IDLER

Return idlers with rubber ring used for sticky conveying materials.
점착성 운송재질에 사용되는 고무링이 부착된 Return Idler.



SPIRAL RETURN IDLER

Not only cleans itself, but keeps the belt clean and double-spiral configuration minimizes belt training problems such as misalignment,
이중 나선형 구조로 자체 및 Belt의 청결을 유지하고 Belt의 사행 등 운전중의 문제점을 최소화함.

ROLLER PRODUCING

We hold the copy right in registered designs of dust-proof sealing structure of bearing part on conveyor roller. The duration and property of labyrinth seal material was remarkably improved by joint R&D with RIST.(Research Institute of Pohang Industrial Science and Technology)

운반시스템 장치인 Conveyor용 Roller는 Bearing부에 대한 Dust 침투방지용 Sealing구조를 자체기술로 개발하여 국내 의장등록 한데 이어 Labyrinth Seal의 소재를 포항산업과학연구원 (RIST)과 공동개발하는데 성공하여 성능과 내구성을 획기적으로 개선하였습니다.



Annually we are manufacturing 400 items of product and our manufacture capacity of conveyor roller is up to 250,000. Encouraged by ISO 9001 certification and our roller quality improvement, we have participated in a new power plant building project and positively advanced to overseas market.

우리회사는 연간 25만개의 Conveyor용 Roller 생산능력을 갖추고 있으며, 400여종에 이르는 제품을 주문생산하고 있습니다. ISO 9001인증취득과 Roller의 품질향상으로 발전소 신축 프로젝트 등 해외시장에도 적극 진출하고 있습니다.



Pipe Loading



Pipe Cutting



Pipe Boring



POSCO PLANTEC
Roller



Assembly



Welding

POSCO PLANTEC STANDARD ROLLER

posco PlantEC's conveyor roller kit has been partitioned from the inside diameter, and has been distinguished into bearing and seal parts. The housing has been precisely machined for minimum friction in bearing fabrication. Moreover, since it uses a labyrinth seal configuration where the outer seal wraps around the inner seal, it perfectly blocks the inflow of moisture and fine dust. This remarkable feature dramatically extends roller service life.

자체 개발에 성공한 Conveyor Roller Kit는 Housing 내경을 단가공하여 Bearing부와 Seal부로 구분 Bearing 조립시 마찰이 최소화되게 Housing을 정밀 가공 하였으며, 또한 외Seal로 내Seal을 감싸는 미로형 Seal 구조로 제작되어 수분 및 미세 Dust유입을 완전 차단시켜 Roller의 수명을 획기적으로 연장 시켰습니다.

LABYRINTH SEAL

The seal structure inside the housing provides excellent dustproofing and waterproofing. It is comprised of an inner side rotating together with the bearing and housing, and an outer side acting as a dust cover that is fixed in the shaft. The innovative labyrinth is uniformly folded between the seals and is filled with grease to prevent fine dust from reaching the bearing.

Housing내의 Seal 구조는 방진,방수에 탁월한 구조로서 Bearing 및 Housing 과 함께 회전 하는 내축과 Shaft에 고정되어 있는 Dust Cover 역할을 하는 외축으로 구성하는 Seal 간의 균일 하게 접은 미로는 어떠한 미세한Dust도 Bearing에 도달하지 못하도록 Grease가 충전된 Type입니다.

PAINTING

Fluid electrostatic painting prevents from rust for storage and keeps the graceful external appearance of Roller.

ROLLER의 마무리를 유체정전 도장하여 외관이 미려하며 보관시 녹 발생 억제에 탁월함.

HOUSING

By distinguishing the housing's inside diameter into bearing and seal parts, and applying a step height between them, friction resistance has been minimized. Inflow of moisture and foreign materials has been blocked perfectly by the housing's precise tolerances.

Housing 내경을 Bearing과 Seal부로 구분 단차를 적용하여 Bearing 조립시 마찰저항 최소화 및 Housing 내경의 정밀 공차 적용으로 수분 및 이물질 유입을 완전히 차단시켰습니다.

SHAFT

The shaft is made with high-precision machined round rod. This guarantees a reliable, precise axis center and axis diameter because both axis ends are machined simultaneously.

Shaft는 정밀도가 높은 마환봉을 사용하며 양축단을 동시에 가공하는 특수한 공법으로, 중요한 축의 Center와 축경등의 정밀도를 확실 히 보증하고 Shaft에 대한 높은 신뢰성 유지시켜 줍니다.

BEARING

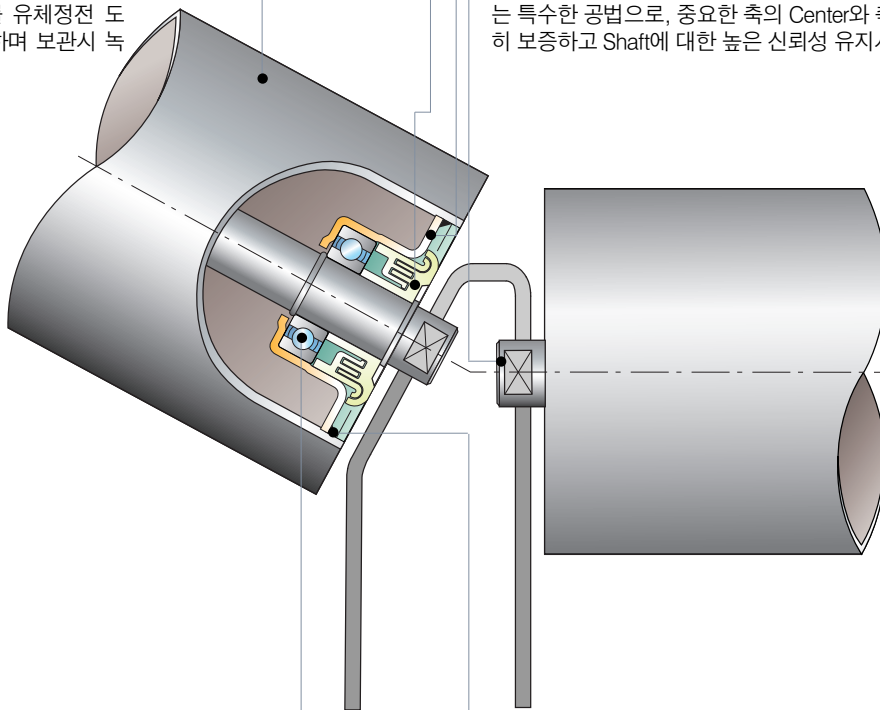
The bearing is inserted under pressure to a precisely machined axis and housing. Dust-proofing and waterproofing are ensured, and rotation is smooth. Its service life has been extended and delivers superior performance, even at high-speed rotation.

Bearing은 정밀하게 가공된 축과 Housing에 압입됩니다. 또한 방진방수가 완벽하고 회전이 원활하여 수명이 연장되고 고속 회전시에도 적합한 성능을 발휘합니다.

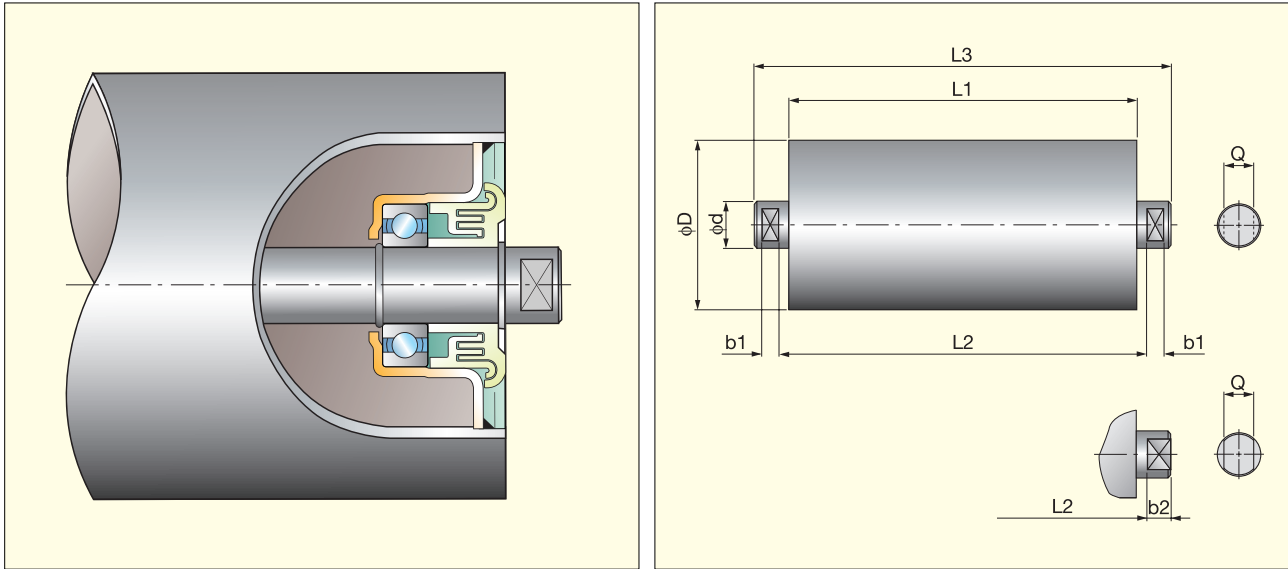
WELDING

Because the housing face and pipe face where bearing and seal are assembled are made into a single piece with CO₂ automatic circumferential welding, moisture penetration has been prevented and bearing service life has been extended to deliver improved roller quality.

CO₂ 자동원주 용접으로 Bearing 및 Seal이 조립되는 Housing 면과 Pipe면을 일체화하여 수분의 침투를 막고 Bearing 수명을 연장함으로써 Roller의 품질향상.



CARRIER & RETURN ROLLER

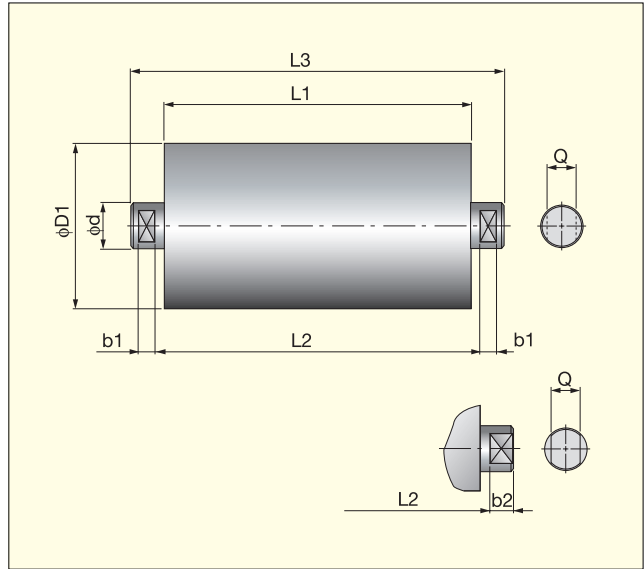
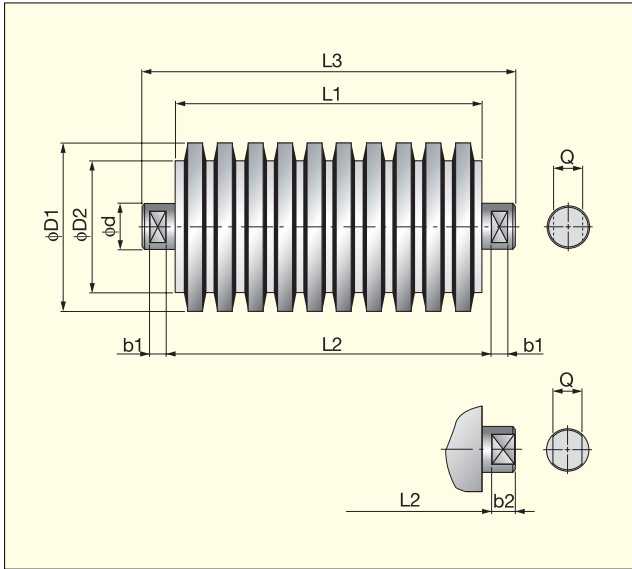


Dimensional details

Unit=mm

item	type	belt width	dimension								bearing No.	weight (kg)
			ϕD	ϕd	L1	L3	L2	b1	b2	Q		
CARRIER ROLLER	CRC-400	400	89.1	20	145	175	153	8	11	14	6204zz	2.1
	CRC-450	450			165	195	173					2.3
	CRC-500	500			180	210	188					2.5
	CRC-600-1	600	114.3	20	210	240	218	8	11	14	6204zz	2.7
	CRC-600-2				3.5							
	CRC-750	750	139.8	25	265	295	273	8	11	14	6204zz	4.2
	CRC-900	900			315	345	323					4.8
	CRC-1050	1050	139.8	25	370	410	380	11.2	15	18	6205zz	7.1
	CRC-1200	1200			420	460	430					7.9
	CRC-1400	1400	165.2	30	500	540	510	11.2	15	22.4	6206zz	12.2
	CRC-1600	1600			580	620	590					13.8
	CRC-1800	1800	165.2	35	650	690	660	11.2	15	25	6207zz	16.4
CRC-2000	2000	730			770	740	18.6					
CRC-2200	2200	165.2	40	800	840	810	11.2	15	31	6308zz	23.4	
RETURN ROLLER	TRC-400	400	89.1	20	460	505	480	8	12.5	14	6204zz	5.1
	TRC-450	450			510	555	530					5.5
	TRC-500	500			560	605	580					6.0
	TRC-600-1	600	114.3	20	660	705	680	8	12.5	14	6204zz	6.9
	TRC-600-2				8.9							
	TRC-750	750	139.8	25	850	905	880	8	12.5	14	6204zz	11.3
	TRC-900	900			1000	1055	1030					13.1
	TRC-1050	1050	139.8	25	1150	1215	1180	11.2	17.5	18	6205zz	19.4
	TRC-1200	1200			1300	1365	1330					21.7
	TRC-1400	1400	165.2	30	1510	1585	1550	11.2	17.5	22.4	6206zz	32.9
	TRC-1600	1600			1710	1785	1750					36.9
	TRC-1800	1800	165.2	35	2000	2075	2040	11.2	17.5	25	6207zz	47.2
TRC-2000	2000	2200			2275	2240	51.6					
TRC-2200	2200	165.2	40	2400	2475	2440	11.2	17.5	31	6308zz	63.1	

IMPACT ROLLER & 2-ROLL TYPE RETURN ROLLER



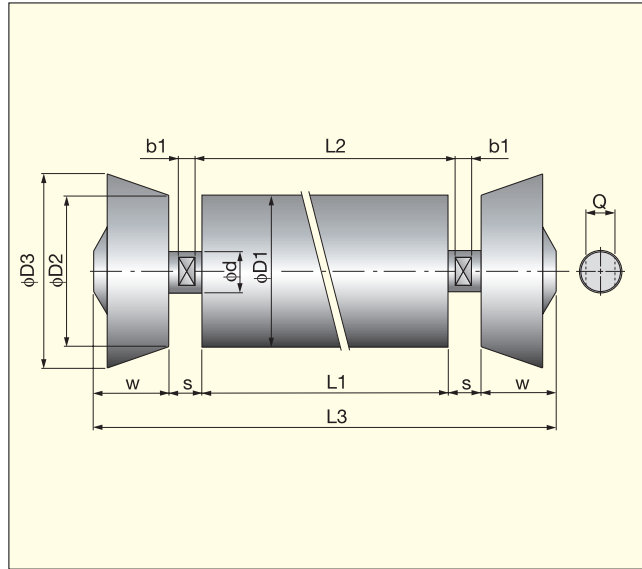
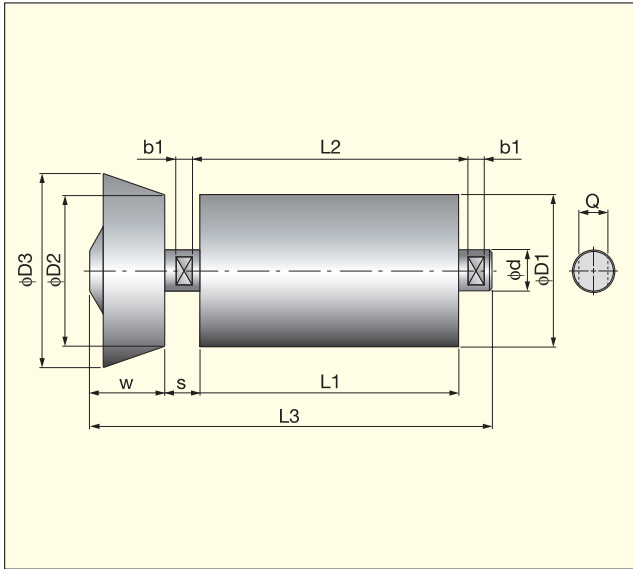
Dimensional details

Unit=mm

item	type	belt width	dimension									bearing No.	weight (kg)
			phi D1	phi D2	phi d	L1	L3	L2	b1	b2	Q		
IMPACT ROLLER	CRI-400	400	90	70	20	145	175	153	8	11	14	6204zz	2.2
	CRI-450	450				165	195	173					2.4
	CRI-500	500				180	210	188					2.6
	CRI-600-1	600	115	95	20	210	240	218	11.2	15	22.4	6206zz	2.8
	CRI-600-2					4.2							
	CRI-750	750	140	110	25	265	295	273	18	6205zz	5.2		
	CRI-900	900	315	345	323	6.0							
	CRI-1050	1050	140	110	25	370	410	380			9.4		
	CRI-1200	1200	166	136	30	420	460	430	11.2	15	25	6207zz	10.7
	CRI-1400	1400				500	540	510					16.8
	CRI-1600	1600				580	620	590					19.4
	CRI-1800	1800				650	690	660					22.6
	CRI-2000	2000				730	770	740					25.9
CRI-2200	2200	800	840	810	31	6308zz	26.1						
2-ROLL TYPE RETURN ROLLER	WRC-400	400	89.1	-	20	220	250	228	8	11	14	6204zz	2.8
	WRC-450	450				245	275	253					3.1
	WRC-500	500				270	300	278					3.3
	WRC-600-1	600	114.3	-	20	320	350	328	11.2	15	22.4	6206zz	3.7
	WRC-600-2					4.8							
	WRC-750	750	114.3	415	445	423	6.0						
	WRC-900	900	114.3	490	520	498	6.9						
	WRC-1050	1050	139.8	-	25	565	605	575	18	6205zz	10.2		
	WRC-1200	1200				640	680	650			11.3		
	WRC-1400	1400	165.2	-	30	750	790	760	11.2	15	25	6207zz	17.2
	WRC-1600	1600				850	890	860					19.3
	WRC-1800	1800				980	1020	990					24.2
	WRC-2000	2000				1080	1120	1090					26.4
WRC-2200	2200	1180				1220	1190	31					6308zz

SELF-ALIGNING CARRIER ROLLER & SELF-ALIGNING RETURN ROLLER

(REVERSIBLE TYPE)

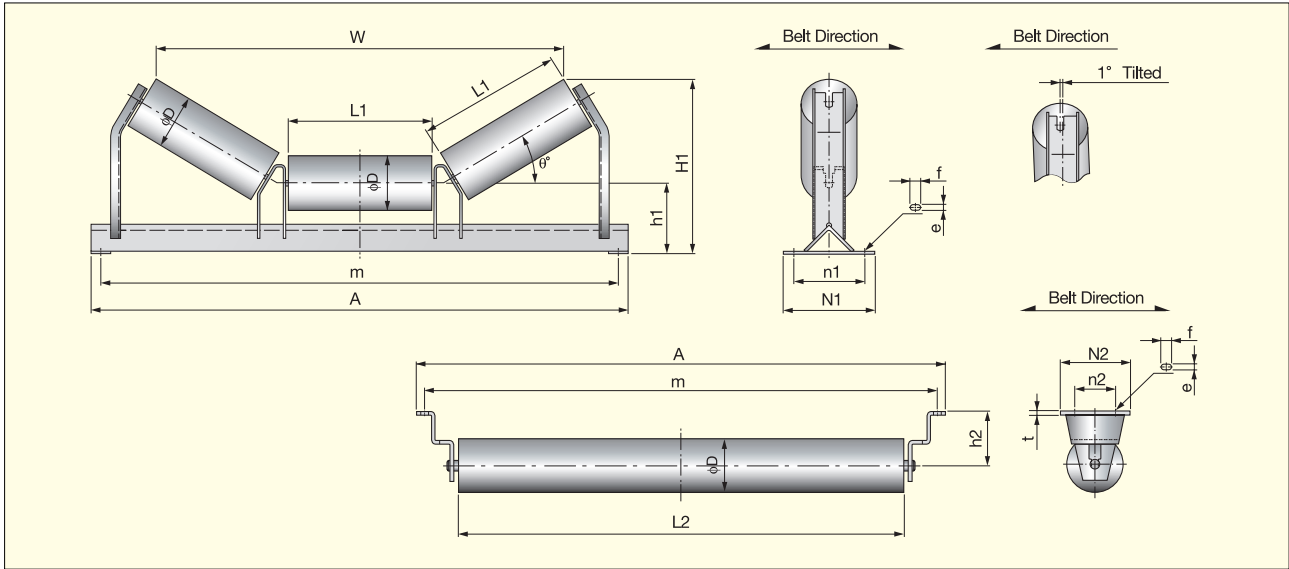


Dimensional details

Unit=mm

item	type	belt width	dimension											bearing No.	weight (kg)
			φD1	φd	φD2	φD3	L1	L2	L3	b1	s	w	Q		
SELF ALIGNING CARRIER ROLLER	CRA-400	400	89.1	20	90	126	110	118	208	8	16	67	14	6204zz	3.9
	CRA-450	450					125	133	223						4.0
	CRA-500	500					140	148	238						4.1
	CRA-600-1	600	114.3	115	152	170	178	208	11.2	22	84	25	6207zz	4.4	
	CRA-600-2					5.7									
	CRA-750	750	114.3	115	152	220	228	318	11.2	22	84	25	6207zz	6.3	
	CRA-900	900	275	283	373	6.9									
	CRA-1050	1050	139.8	25	140	180	345	355	461	11.2	22	84	25	6207zz	10.3
	CRA-1200	1200					380	390	496						10.9
	CRA-1400	1400	165.2	30	166	205	450	460	576	11.2	22	84	25	6207zz	16.0
	CRA-1600	1600					515	525	641						17.3
	CRA-1800	1800					575	585	701						20.2
CRA-2000	2000	165.2	35	166	205	640	650	766	11.2	22	84	25	6207zz	21.7	
CRA-2200	2200					710	720	836						26.4	
SELF ALIGNING RETURN ROLLER	TRA-400	400	89.1	20	90	126	400	408	566	8	16	67	14	6204zz	9.2
	TRA-450	450					450	458	616						9.6
	TRA-500	500					500	508	666						10.1
	TRA-600-1	600	114.3	115	152	600	608	766	11.2	22	84	25	6207zz	11.0	
	TRA-600-2					14.2									
	TRA-750	750	114.3	115	152	750	758	916	11.2	22	84	25	6207zz	16.5	
	TRA-900	900	900	908	1066	18.3									
	TRA-1050	1050	139.8	25	140	180	1050	1060	1242	11.2	22	84	25	6207zz	26.5
	TRA-1200	1200					1200	1210	1392						28.8
	TRA-1400	1400	165.2	30	166	205	1400	1410	1612	11.2	22	84	25	6207zz	42.7
	TRA-1600	1600					1600	1610	1812						26.7
	TRA-1800	1800					1800	1810	2012						57.1
	TRA-2000	2000	165.2	35	166	205	2000	2010	2212	11.2	22	84	25	6207zz	61.6
	TRA-2200	2200					2200	2210	2412						73.3

CARRYING IDLER RETURN IDLER



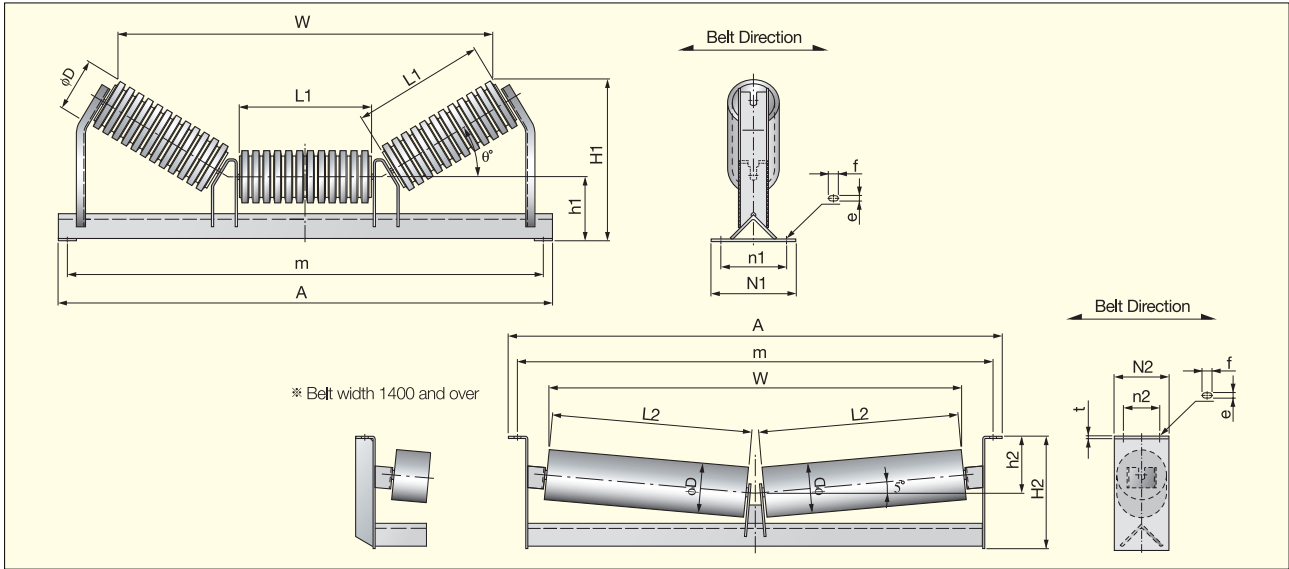
Dimensional details

Unit=mm

item	type	belt width	dimension										weight (kg)							
			φD	L1	A	m	h1	n1	N1	e × f	H1			W						
											θ=30°	θ=35°		θ=45°	θ=30°	θ=35°	θ=45°			
CARRYING IDLER	PCPC-400	400	89.1	145	690	640	125	140	190	15×25	246	257	278	426	411	379	12.2			
	PCPC-450	450		165	740	690					256	269	292	481	464	428	13.0			
	PCPC-500	500		180	790	740					264	277	303	522	504	464	13.7			
	PCPC-600-1	600	114.3	210	890	840	140	150	200	15×25	294	310	339	631	583	536	15.0			
	PCPC-600-2										317	333	364	610	589	546	19.7			
	PCPC-750	750	139.8	265	1090	1040	150	160	210	19×32	344	365	403	760	734	678	24.1			
	PCPC-900	900									315	1240	1190	370	393	438	897	866	799	27.3
	PCPC-1050	1050									370	1390	1340	441	468	519	1053	1012	931	41.7
	PCPC-1200	1200	165.2	420	1540	1490	180	180	230	19×32	466	497	555	1190	1144	1052	45.7			
	PCPC-1400	1400									500	1790	1730	589	626	514	1414	1361	1253	78.3
	PCPC-1600	1600									580	1990	1930	629	672	752	1633	1572	1446	92.0
	PCPC-1800	1800	165.2	650	2280	2220	280	330	390	19×32	694	742	832	1824	1757	1615	122.5			
	PCPC-2000	2000									730	2480	2420	734	788	888	2042	1968	1808	134.5
	PCPC-2200	2200									800	2700	2640	794	853	963	2234	2152	1977	165.9

item	type	belt width	dimension									weight (kg)			
			φD	L2	m	A	h2	n2	N2	t	e × f				
RETURN IDLER	PTRC-400	400	89.1	460	640	690	110	60	120	4.5	15×25	6.5			
	PTRC-450	450		510	690	740						6.9			
	PTRC-500	500		560	740	790						7.4			
	PTRC-600-1	600	114.3	660	840	890	130	100	170	6	15×25	8.3			
	PTRC-600-2											10.8			
	PTRC-750	750	139.8	850	1040	1090	160	120	200	9	19×32	13.1			
	PTRC-900	900										1000	1190	1240	14.9
	PTRC-1050	1050										1150	1340	1390	22.2
	PTRC-1200	1200	165.2	1300	1490	1540	160	120	200	9	19×32	24.5			
	PTRC-1400	1400										1510	1730	1790	39.4
	PTRC-1600	1600										1710	1930	1990	43.5
	PTRC-1800	1800	165.2	2000	2220	2280	160	120	200	9	19×32	53.4			
	PTRC-2000	2000										2200	2420	2480	57.9
	PTRC-2200	2200										2400	2640	2700	69.3

IMPACT IDLER 2-ROLL RETURN IDLER



Dimensional details

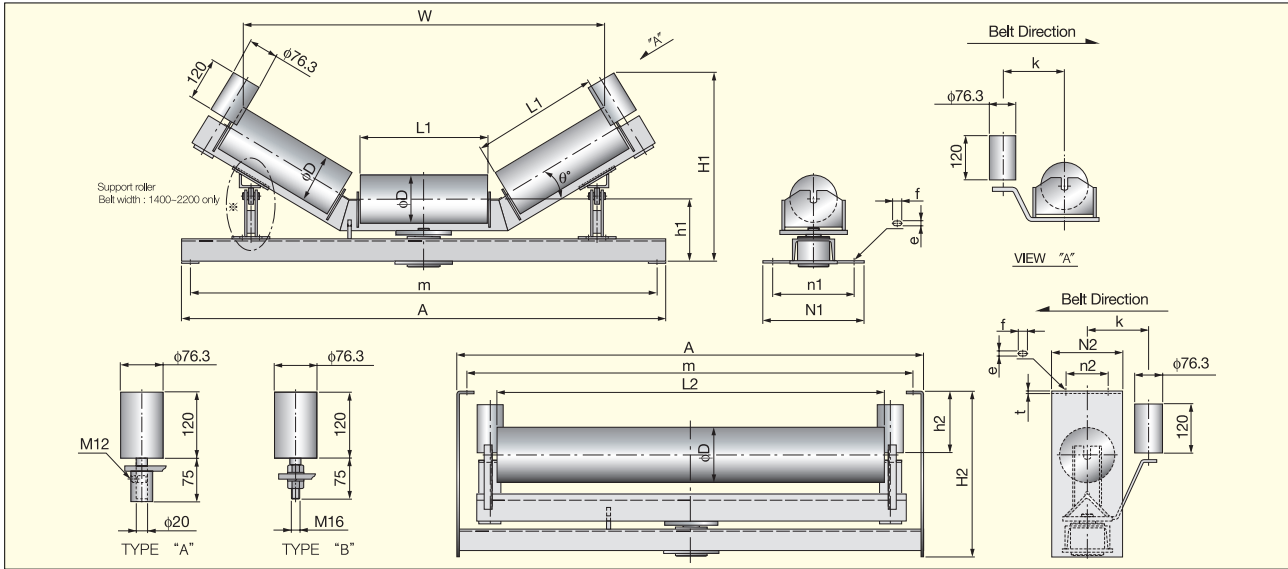
Unit=mm

item	type	belt width	dimension										weight (kg)								
			φD	L1	A	m	h1	n1	N1	e × f	H1			W							
											θ=30°	θ=35°		θ=45°	θ=30°	θ=35°	θ=45°				
IMPACT IDLER	PCRI-400	400	90	145	690	640	125	140	190	15×25	246	257	278	426	411	379	12.3				
	PCRI-450	450		165	740	690					256	269	292	481	464	428	13.4				
	PCRI-500	500		180	790	740					264	277	303	522	504	464	14.1				
	PCRI-600-1	600	115	210	890	840	140	150	200		294	310	339	631	583	536	15.5				
	PCRI-600-2										317	333	364	610	589	546	21.9				
	PCRI-750	750	140	265	1090	1040	150	160	210		344	365	403	760	734	678	27.1				
	PCRI-900	900									315	1240	1190	370	393	438	897	866	799	30.9	
	PCRI-1050	1050									370	1390	1340	441	468	519	1053	1012	931	48.6	
	PCRI-1200	1200	166	420	1540	1490	180	180	230		19×32	466	497	555	1190	1144	1052	53.9			
	PCRI-1400	1400										250	280	340	589	626	514	1414	1361	1253	92.2
	PCRI-1600	1600													629	672	752	1633	1572	1446	108.6
	PCRI-1800	1800	280	650	2280	2220	330	390	694			742	832	1824	1757	1615	141.3				
	PCRI-2000	2000							734			788	888	2042	1968	1808	156.4				
	PCRI-2200	2200							800			2700	2640	305	400	23×35	794	853	963	2234	2152

item	type	belt width	dimension										weight (kg)											
			φD	L2	m	A	h2	H2	W	n2	N2	t		e × f										
2-ROLL RETURN IDLER	PWRC-400	400	89.1	220	640	690	122	227	470	60	120	6	15×25	12.2										
	PWRC-450	450		245	690	740	123	228	520					12.9										
	PWRC-500	500		270	740	790	124	234	570					13.6										
	PWRC-600-1	600	114.3	320	840	890	126	236	670					15.0										
	PWRC-600-2													126	256	667	18.7							
	PWRC-750	750	139.8	415	1040	1090	131	266	857					23.2										
	PWRC-900	900												490	1190	1240	134	269	1006	26.0				
	PWRC-1050	1050												565	1340	1390	157	312	1163	39.9				
	PWRC-1200	1200	165.2	640	1490	1540	161	316	1313					100	170	9	19×32	43.7						
	PWRC-1400	1400																750	1730	1790	195	375	1530	76.8
	PWRC-1600	1600																850	1930	1990	201	381	1729	84.1
	PWRC-1800	1800	230	980	2220	2280	204	414	1988					120	200	9	23×35	118.8						
	PWRC-2000	2000																1080	2420	2480	209	419	2187	128.1
	PWRC-2200	2200																1180	2640	2700	213	438	2386	158.3

SELF-ALIGNING CARRYING IDLER SELF-ALIGNING RETURN IDLER

(POSITIVE TYPE : A-TYPE)



Dimensional details

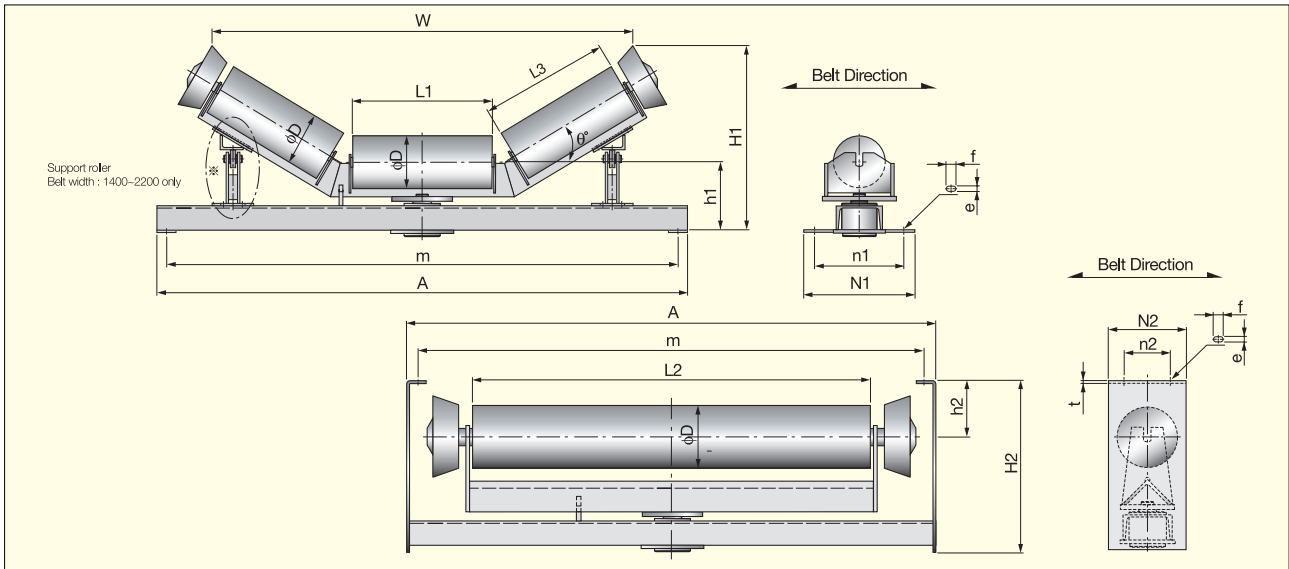
Unit=mm

item	type	belt width	dimension											weight (kg)											
			φD	L1	m	A	h1	n1	N1	k	e × f	H1			W										
												θ=30°	θ=35°		θ=45°	θ=30°	θ=35°	θ=45°							
SELF ALIGNING CARRYING IDLER	PSAC-400	400	89.1	145	640	690	135	140	190	150	15 × 25	256	267	288	426	411	379	16.3							
	PSAC-450	450		165	690	740													266	279	302	481	464	428	17.0
	PSAC-500	500		180	740	790													274	287	313	522	504	464	17.7
	PSAC-600-1	600	114.3	210	840	890	150	150	200	180	19 × 32	304	320	349	631	583	536	20.9							
	PSAC-600-2																		327	343	374	610	589	546	22.3
	PSAC-750	750	114.3	265	1040	1090	160	160	210	180	19 × 32	354	375	413	760	734	678	32.9							
	PSAC-900	900	139.8	315	1190	1240	190	180	230	180	19 × 32	380	403	448	897	866	799	35.0							
	PSAC-1050	1050	139.8	370	1340	1390	190	180	230	180	19 × 32	451	478	529	1053	1012	931	48.2							
	PSAC-1200	1200	165.2	420	1490	1540	260	280	340	250	19 × 32	476	507	565	1190	1144	1052	51.3							
	PSAC-1400	1400	165.2	500	1730	1790	260	280	340	250	19 × 32	599	636	524	1414	1361	1253	133.9							
	PSAC-1600	1600	165.2	580	1930	1990	290	330	390	250	23 × 35	639	682	762	1633	1572	1446	142.4							
	PSAC-1800	1800	165.2	650	2220	2280	290	330	390	250	23 × 35	704	752	842	1824	1757	1615	166.1							
	PSAC-2000	2000	165.2	730	2420	2480	315	330	400	250	23 × 35	744	798	898	2042	1968	1808	175.8							
	PSAC-2200	2200	165.2	800	2640	2700	315	330	400	250	23 × 35	804	863	973	2234	2152	1977	185.5							

item	type	belt width	dimension											weight (kg)	
			φD	L2	m	A	h2	H2	t	n2	N2	k	e × f		
SELF ALIGNING RETURN IDLER	PSAT-400	400	89.1	460	640	690	100	295	6	60	130	150	15 × 25	24.7	
	PSAT-450	450		510	690	740									25.4
	PSAT-500	500		560	740	790									26.6
	PSAT-600-1	600	114.3	660	840	890	100	310	6	150	180	15 × 25	28.2		
	PSAT-600-2													350	31.2
	PSAT-750	750	114.3	850	1040	1090	100	350	6	150	180	15 × 25	33.6		
	PSAT-900	900	139.8	1000	1190	1240	120	395	100	170	180	15 × 25	36.9		
	PSAT-1050	1050	139.8	1150	1340	1390	120	395	100	170	180	15 × 25	44.2		
	PSAT-1200	1200	165.2	1300	1490	1540	160	490	9	200	250	19 × 32	49.2		
	PSAT-1400	1400	165.2	1510	1730	1790	160	490	9	200	250	19 × 32	110.6		
	PSAT-1600	1600	165.2	1710	1930	1990	160	540	9	220	250	19 × 32	133.8		
	PSAT-1800	1800	165.2	2000	2220	2280	160	540	9	220	250	19 × 32	154.5		
	PSAT-2000	2000	165.2	2200	2420	2480	160	560	9	230	250	23 × 35	172.2		
	PSAT-2200	2200	165.2	2400	2640	2700	160	560	9	230	250	23 × 35	188.3		

SELF-ALIGNING CARRYING IDLER SELF-ALIGNING RETURN IDLER

(REVERSIBLE TYPE : B-TYPE)



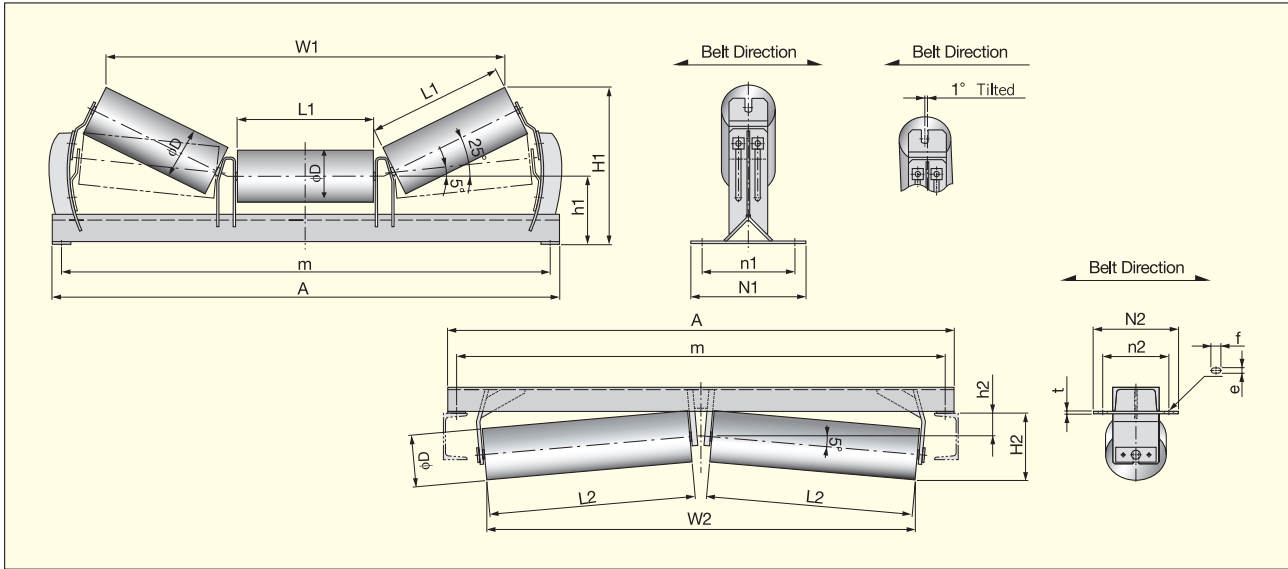
Dimensional details

Unit=mm

item	type	belt width	dimension										weight (kg)										
			φD	L1	L3	m	A	h1	n1	N1	e × f	H1			W								
												θ=30°		θ=35°	θ=45°	θ=30°	θ=35°	θ=45°					
SELF ALIGNING(REVERSIBLE TYPE) CARRYING IDLER	PSAC-400	400	89.1	145	110	640	690	135	140	190	15×25	290	303	327	470	449	404	16.3					
	PSAC-450	450		165	125	690	740					298	312	337	516	494	445	17.0					
	PSAC-500	500		180	140	740	790					305	320	348	557	534	482	17.7					
	PSAC-600-1	600	114.3	210	170	840	890	150	150	200		335	353	384	639	613	554	20.9					
	PSAC-600-2											359	376	409	645	618	563	22.3					
	PSAC-750	750	114.3	265	220	1040	1090	160	160	210		384	405	444	786	755	689	32.9					
	PSAC-900	900	315	275	1190	1240	411					437	483	932	895	816	35.0						
	PSAC-1050	1050	139.8	370	345	1340	1390	190	180	230		496	527	584	1132	1083	983	48.2					
	PSAC-1200	1200										420	380	1490	1540	514	547	609	1242	1190	1083	51.3	
	PSAC-1400	1400	165.2	500	450	1730	1790	260	280	340		19×32	632	671	742	1450	1390	1270	133.9				
	PSAC-1600	1600											580	515	1930	1990	665	708	788	1642	1577	1442	142.4
	PSAC-1800	1800											650	575	2220	2280	725	772	861	1816	1745	1596	166.1
	PSAC-2000	2000	290	730	640	2420	2480	330	390	757			810	907	2009	1932	1768	175.8					
	PSAC-2200	2200								800			710	2640	2700	315	400	23×35	817	875	981	2200	2116

item	type	belt width	dimension										weight (kg)						
			φD	L2	m	A	h2	H2	t	n2	N2	e × f							
SELF ALIGNING(REVERSIBLE TYPE) CARRYING IDLER	PSAT-400	400	89.1	460	640	690	100	295	6	60	130	15×25	24.7						
	PSAT-450	450		510	690	740							25.4						
	PSAT-500	500		560	740	790							26.6						
	PSAT-600-1	600	114.3	660	840	890							310	6	150	170	28.2		
	PSAT-600-2																31.2		
	PSAT-750	750	850	1040	1090	350							150	170	33.6				
	PSAT-900	900	1000	1190	1240			36.9											
	PSAT-1050	1050	139.8	1150	1340	1390		120	395	100	170		170	44.2					
	PSAT-1200	1200												1300	1490	1540	49.2		
	PSAT-1400	1400	165.2	1510	1730	1790		160	490	9	120		200	19×32	110.6				
	PSAT-1600	1600													1710	1930	1990	220	133.8
	PSAT-1800	1800													2000	2220	2280		154.5
	PSAT-2000	2000	220	2200	2420	2480		160	540	9	120		220	23×35	172.2				
	PSAT-2200	2200													2400	2640	2700	560	230

TRANSITION IDLER INVERTED RETURN IDLER



Dimensional details

Unit=mm

item	type	belt width	dimension											weight (kg)							
			φD1	L1	m	A	h1	n1	N1	e × f	H1		W1								
											θ=5°	θ=25°	θ=5°		θ=25°						
TRANSITION IDLER	PCRT-400	400	89.1	145	640	690	125	140	190	15 × 25	189	236	507	450	12.2						
	PCRT-450	450		165	690	740										210	278	702	633	15.0	
	PCRT-500	500		180	740	790															234
	PCRT-600-1	600	210	840	890	140	150	200	238		324	874	786	24.1							
	PCRT-600-2														114.3	265	1040	1090	150	160	210
	PCRT-750	750	315	1190	1240	180	180	230	292		412	1205	1090	41.7							
	PCRT-900	900	370	1340	1390					292					433	1354	1231	45.7			
	PCRT-1050	1050	420	1490	1540														250	280	340
	PCRT-1200	1200	500	1730	1790	280	330	390	430	643	2050	1876	122.5								
	PCRT-1400	1400	580	1930	1990									280	330	390	437	677			
	PCRT-1600	1600	650	2220	2280	280	330	390	437	677	2289	2101	134.5								
	PCRT-1800	1800	730	2420	2480									305	400	23 × 35	468	732	2499	2298	165.9
	PCRT-2000	2000	800	2640	2700	305	400	23 × 35	468	732	2499	2298	165.9								
	PCRT-2200	2200	800	2640	2700									305	400	23 × 35	468	732	2499	2298	165.9

item	type	belt width	dimension											weight (kg)
			φD	L2	m	A	h2	H2	W2	n2	N2	e × f	t	
INVERTED IDLER	PIVT-400	400	89.1	220	640	690	50	116	480	140	190	15 × 25	6	13.0
	PIVT-450	450		245	690	740		118	530					14.0
	PIVT-500	500		270	740	790		120	580					15.0
	PIVT-600-1	600	320	840	890	124	680	150	200	17.0				
	PIVT-600-2										137			677
	PIVT-750	750	415	1040	1090	60	145	867	160	210	28.5			
	PIVT-900	900	490	1190	1240		152	1016				32.6		
	PIVT-1050	1050	565	1340	1390		181	1173				41.8		
	PIVT-1200	1200	640	1490	1540	70	188	1323	180	230	46.5			
	PIVT-1400	1400	750	1730	1790		221	1550				280	340	83.3
	PIVT-1600	1600	850	1930	1990	229	1749	330	390	19 × 32	9			
	PIVT-1800	1800	980	2220	2280	241	2008					330	390	19 × 32
	PIVT-2000	2000	1080	2420	2480	249	2207	400	23 × 35	122.4				
	PIVT-2200	2200	1180	2640	2700	258	2406				400	23 × 35	157.7	